

Sarı

for full orchestra

Kübra Aytulun

Instrumentation

Piccolo

2 Flutes

2 Oboes

Cor Anglais

2 Clarinets in Bb

Bass Clarinet in Bb

2 Bassoon

Contrabassoon

4 Horns in F

2 Trumpets in C

2 Trombones

Tuba

Timpani

3 Percussionist

Bass Drum, Tam-Tam, Xylophone

Strings

Duration:~8 min.

2017, Ankara

Instructions

Playing Position:

B : On the bridge

ST : Sul tasto

SP : Sul ponticello

Quarter Tones:

 : One quarter tone higher than the natural pitch.

 : One quarter tone lower than the natural pitch.

 : One quarter tone higher than the sharp pitch

 : One quarter tone lower than the sharp pitch.



Key clicks; these are produced by pressing down

the keys strongly, but without blowing air into the tube.

Random key clicks; the performer doesn't have to perform the written key clicks.

Performer can perform the effect on any key.



Indicates a gradual speeding up or slowing down

between the starting and ending rhythmic values. The performer doesn't have to realize the effect within the written number of stems.



The thick horizontal bar is used to indicate that how long the preferred technique will continue



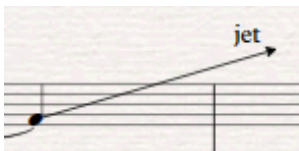
Niente, start lightly like sound of breathing.



When appears in strings, the performer should gradually increase the pressure of the bow, to arrive the maximum amount of pressure at the end of the gesture.



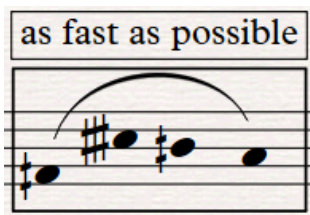
The percussionist should scrape on outside edge of tam-tam with triangle beater.



Jet whistle; the mouthpiece of the flute is closed between two lips and air should be blown with high pressure .

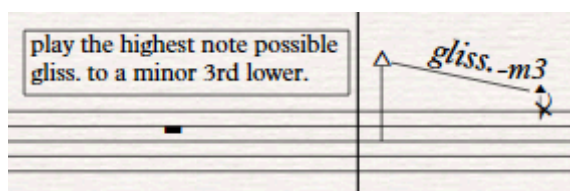


Play the highest possible pitch on the instrument.



Play as fast as possible; the motive should be

performed by playing as fast as possible. The instruments do not need to be synchronized.



This has to be very slow glissando.

Notation of this passage is relative, which means no exact note values specified. Performers should start to play at this passage almost in time. This is expected to result in a little heterophony but not too much.

SANRI

Kübra AYDULUN

♩ = 100

5

Piccolo

Flutes

Oboes

Clarinets in B \flat

Bass Clarinet in B \flat

Bassoon

Contrabassoon

Horns in F

Trumpet in B \flat

Trombone

Tuba

Timpani

Bass Drum

Tam-tam

Xylophone

div. 1-2
3-4

div. 5
7-8

Violin I

div. 9-1
11-12

div. 13-1
15-16

Violin II

Viola

Violoncello

Contrabass